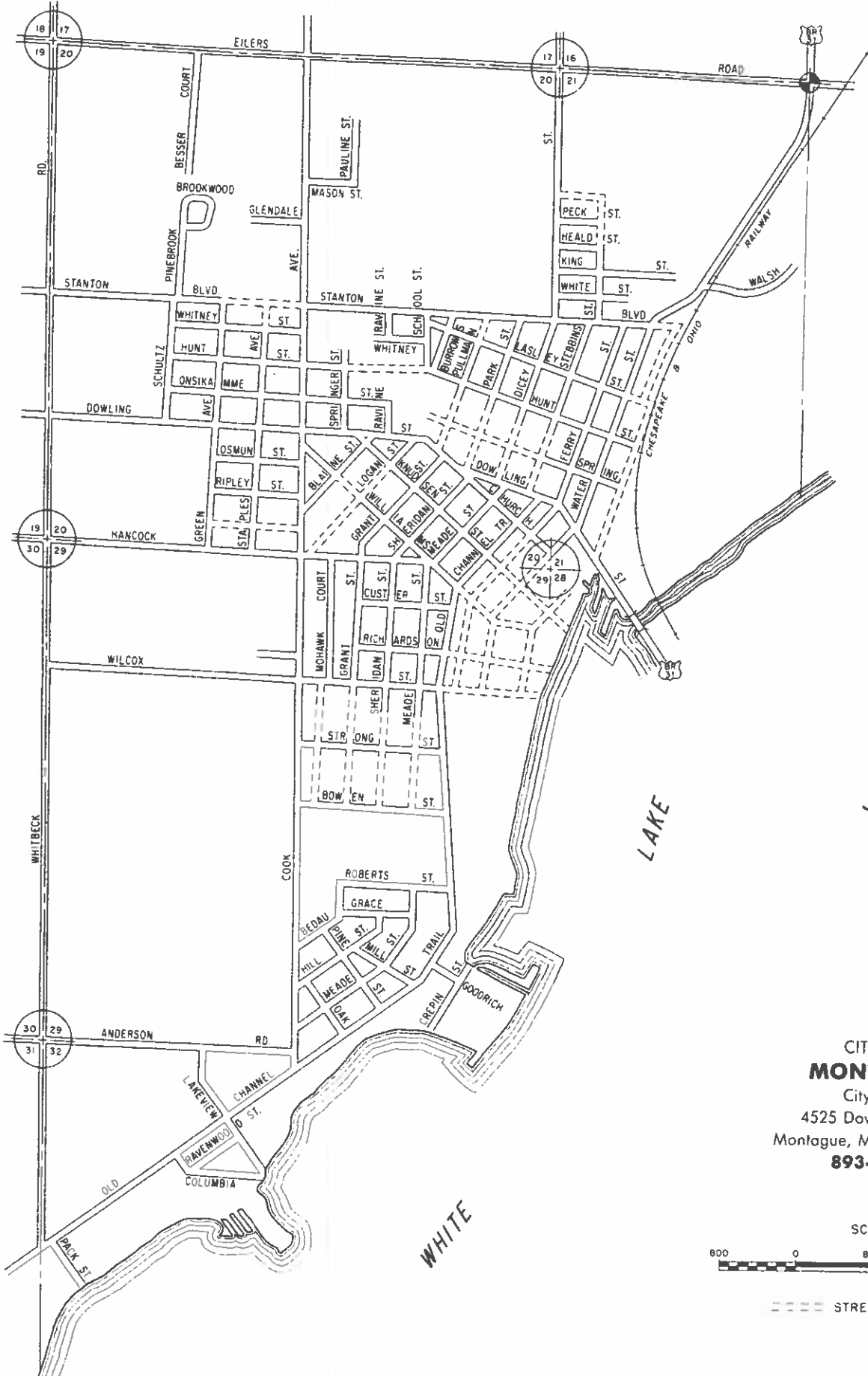
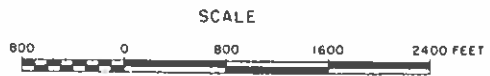


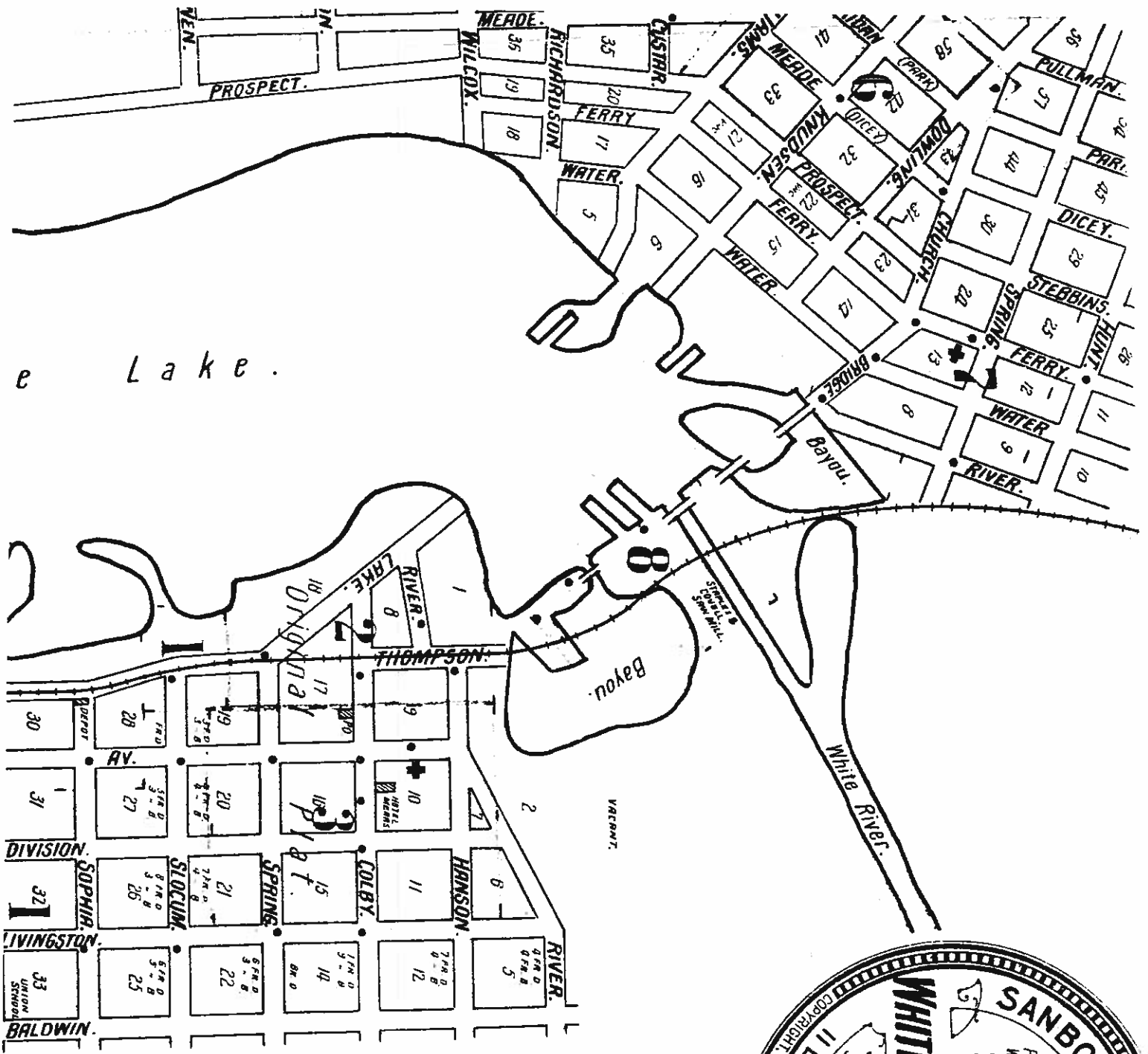
# CITY & VILLAGE MAPS OF MUSKEGON COUNTY



CITY OF  
**MONTAGUE**  
 City Hall  
 4525 Dowling Street  
 Montague, Michigan 49437  
**893-1155**



--- STREETS NOT OPEN



**NOTE.**

**Whitehall.**

**Water Facilities:**  
 SUPPLY FOR DOMESTIC USE FROM ARTESIAN WELLS  
 PUMPED BY SMALL PUMP INTO WATER TANKS CAPY  
 25,000 GALS. EACH  
 TWO WALKER PUMPS COMBINED CAPY. 1,500,000 GALS IN  
 TWENTY FOUR HOURS DRAWING FROM SPRID TANKS AND  
 LAKE THROUGH TWO 8" W. PIPES IN CASE OF FIRE  
 FIVE MILES OF 4", 6" AND 8" IRON W. PIPES.  
 FORTY FIVE DOUBLE HYDS.  
 DOMESTIC PRESSURE: FORTY LBS  
 FIRE " " ONE HUNDRED AND TWENTY FIVE L  
 TOWN HAS NIGHT WATCHMAN.

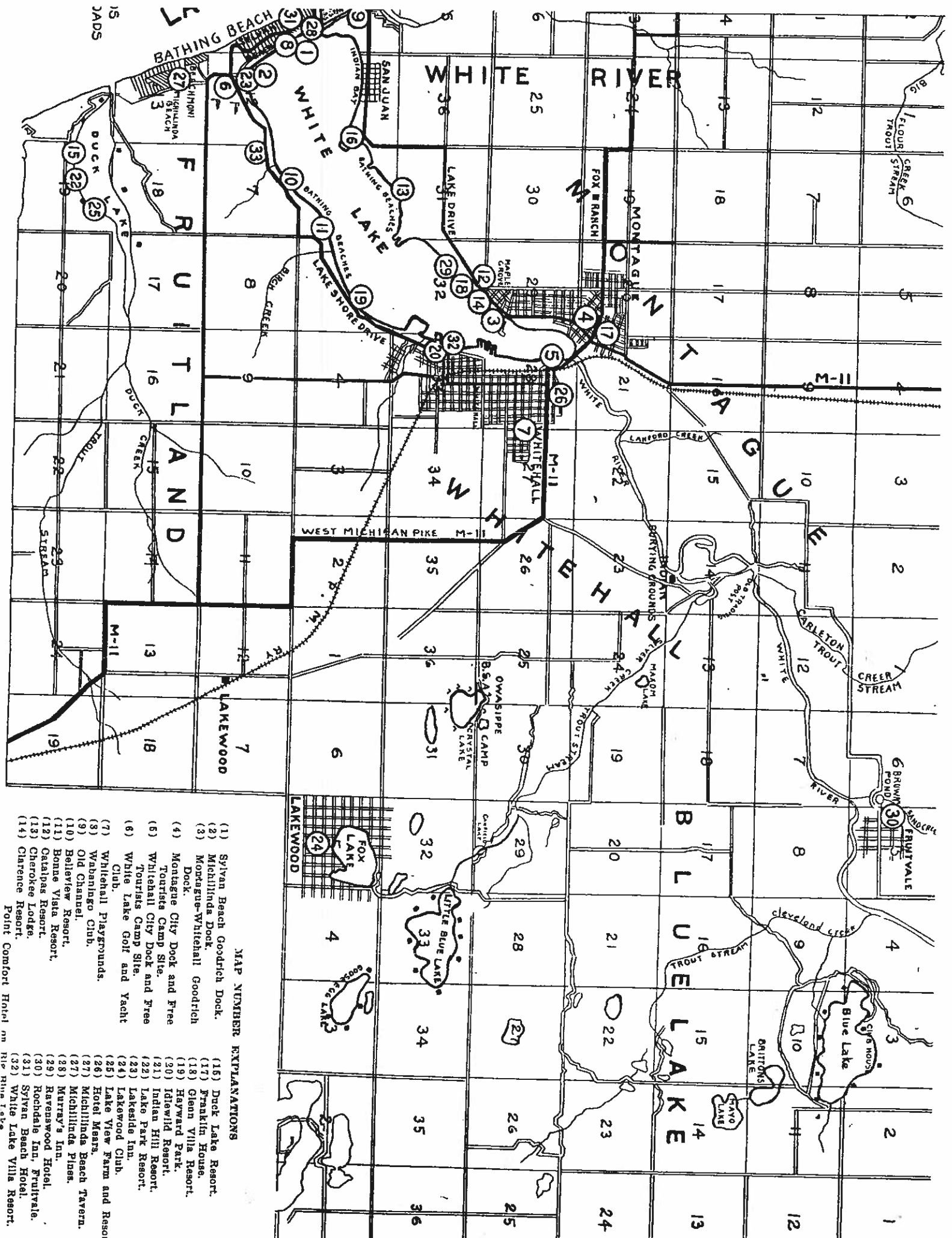
**Fire Deptmt.**  
 VOLUNTEER - THIRTY MEN  
 THREE HOSE SITUATIONS.  
 FOUR INDEPENDENT HOSE CARRS  
 ONE HOON AND LADDER TRUCK.  
 ONE HOLLY STEAMER.  
 2000' 2 1/2" COTTON RUBBER LINED HOSE  
 500' 2 1/2" RUBBER HOSE  
 AUTUMATIC ALARM BELL ON TELEPHONE AT PUMP. SI  
 FIRE ALARM BY WATER WKS. WHISTLE AND ENGINE  
 HOUSE BELL

**Montague.**

**Water Facilities:**  
 WATER PUMP 120,000 GALS CAPY IN TWENTY FOUR HOU  
 DRAWN FROM CREEK THAT IS DAMMED UP  
 1 1/2 MILES OF W. PIPES.  
 TWENTY DOUBLE HYDS.  
 DOMESTIC PRESSURE: THIRTY LBS.  
 FIRE " " ONE HUNDRED AND TEN LBS.  
**Fire Deptmt.:**



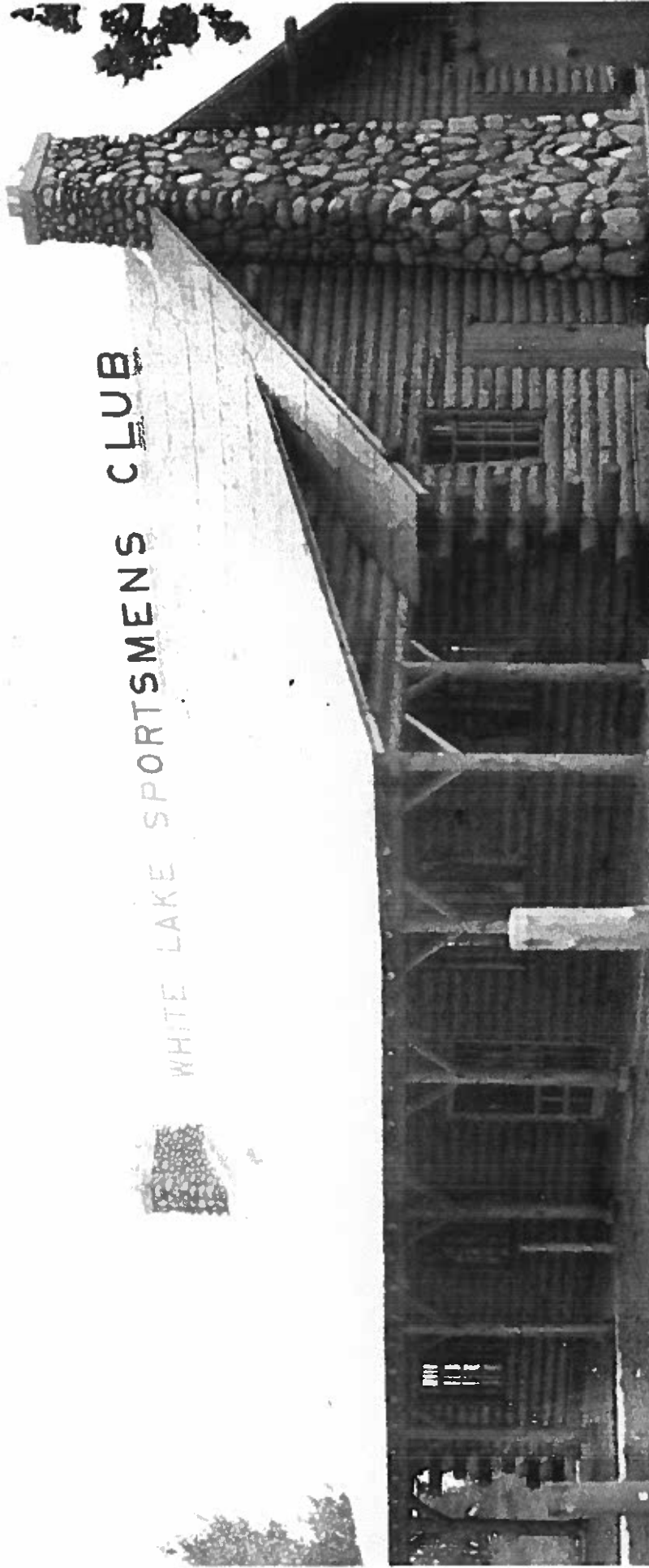




**MAP NUMBER EXPLANATIONS**

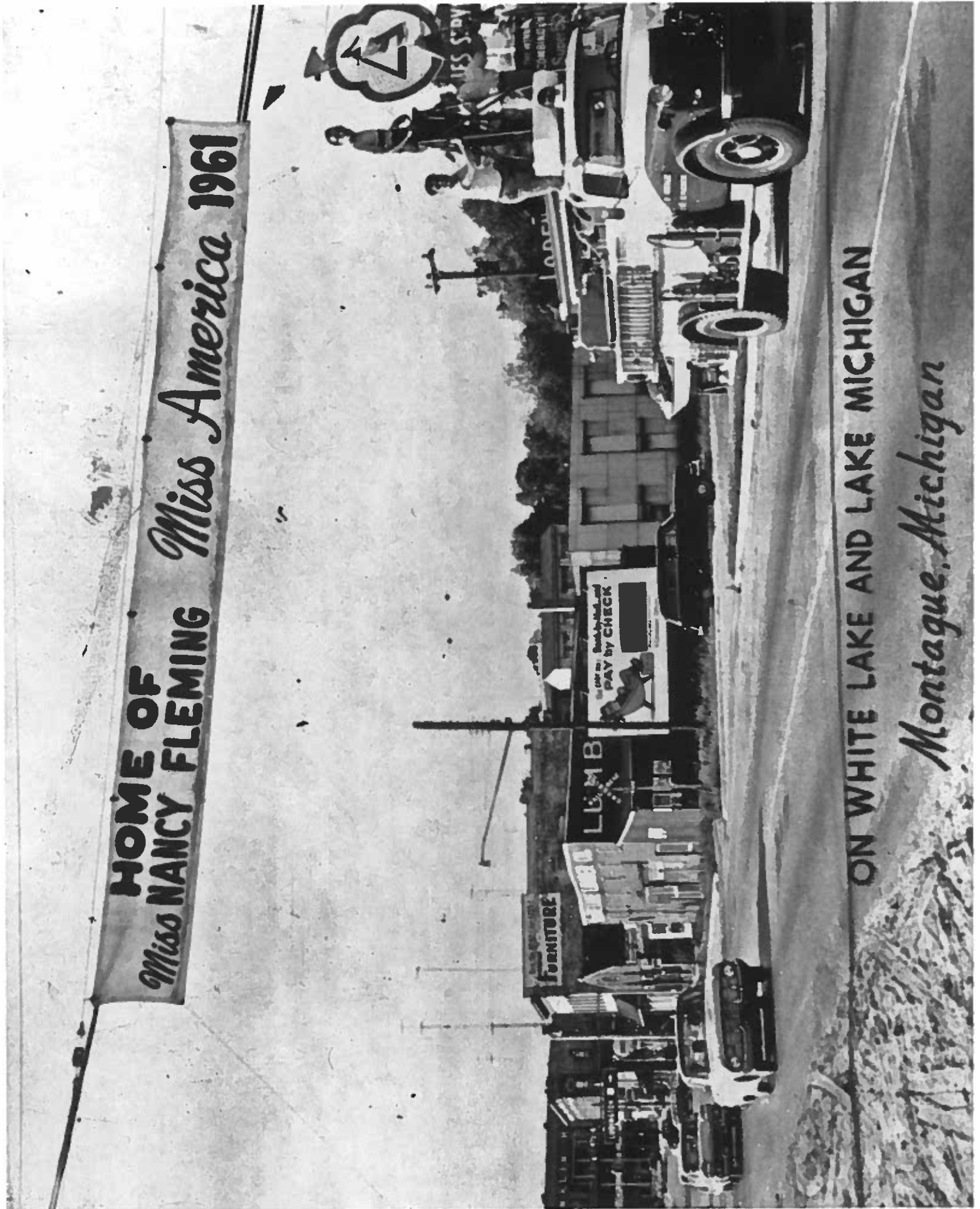
- |  |  |
|--|--|
| (1) Sylvan Beach Goodrich Dock.                      | (15) Duck Lake Resort.                     |
| (2) Michillinda Dock.                                | (17) Franklin House.                       |
| (3) Montague-Whitehall Goodrich Dock.                | (18) Glenn Villa Resort.                   |
| (4) Montague City Dock and Free Tourists Camp Site.  | (19) Hayward Park.                         |
| (5) Whitehall City Dock and Free Tourists Camp Site. | (20) Idlewild Resort.                      |
| (6) White Lake Golf and Yacht Club.                  | (21) Indian Hill Resort.                   |
| (7) Whitehall Playgrounds.                           | (22) Lake Park Resort.                     |
| (8) Wabaningo Club.                                  | (23) Lakeside Inn.                         |
| (9) Old Channel.                                     | (24) Lakewood Club.                        |
| (10) Bellevue Resort.                                | (25) Lake View Farm and Reson Hotel Meats. |
| (11) Bonne Vista Resort.                             | (26) Michillinda Beach Tavern.             |
| (12) Catalpa Resort.                                 | (27) Michillinda Pines.                    |
| (13) Cherokee Lodge.                                 | (28) Murray's Inn.                         |
| (14) Clarence Resort.                                | (29) Ravenswood Hotel.                     |
|  | (30) Rochdale Inn, Fruitvale.              |
|  | (31) Sylvan Beach Hotel.                   |
|  | (32) White Lake Resort.                    |
|  | (33) Point Comfort Hotel on Rip Rins Cab.  |

WHITE LAKE SPORTSMENS CLUB



023  
WHITE HALL MI

**HOME OF**  
*Miss NANCY FLEMING* *Miss America 1961*



**ON WHITE LAKE AND LAKE MICHIGAN**

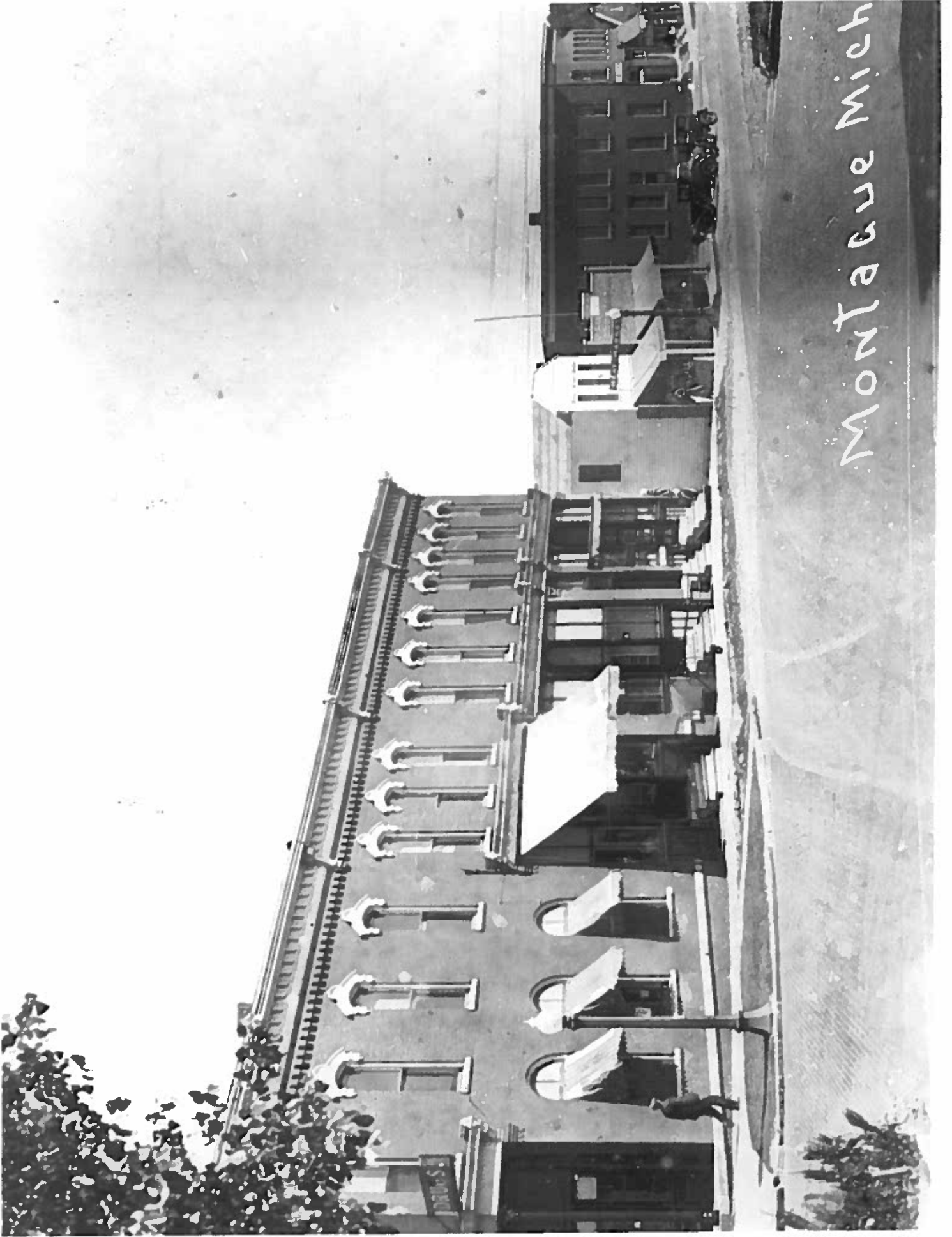
*Montague, Michigan*



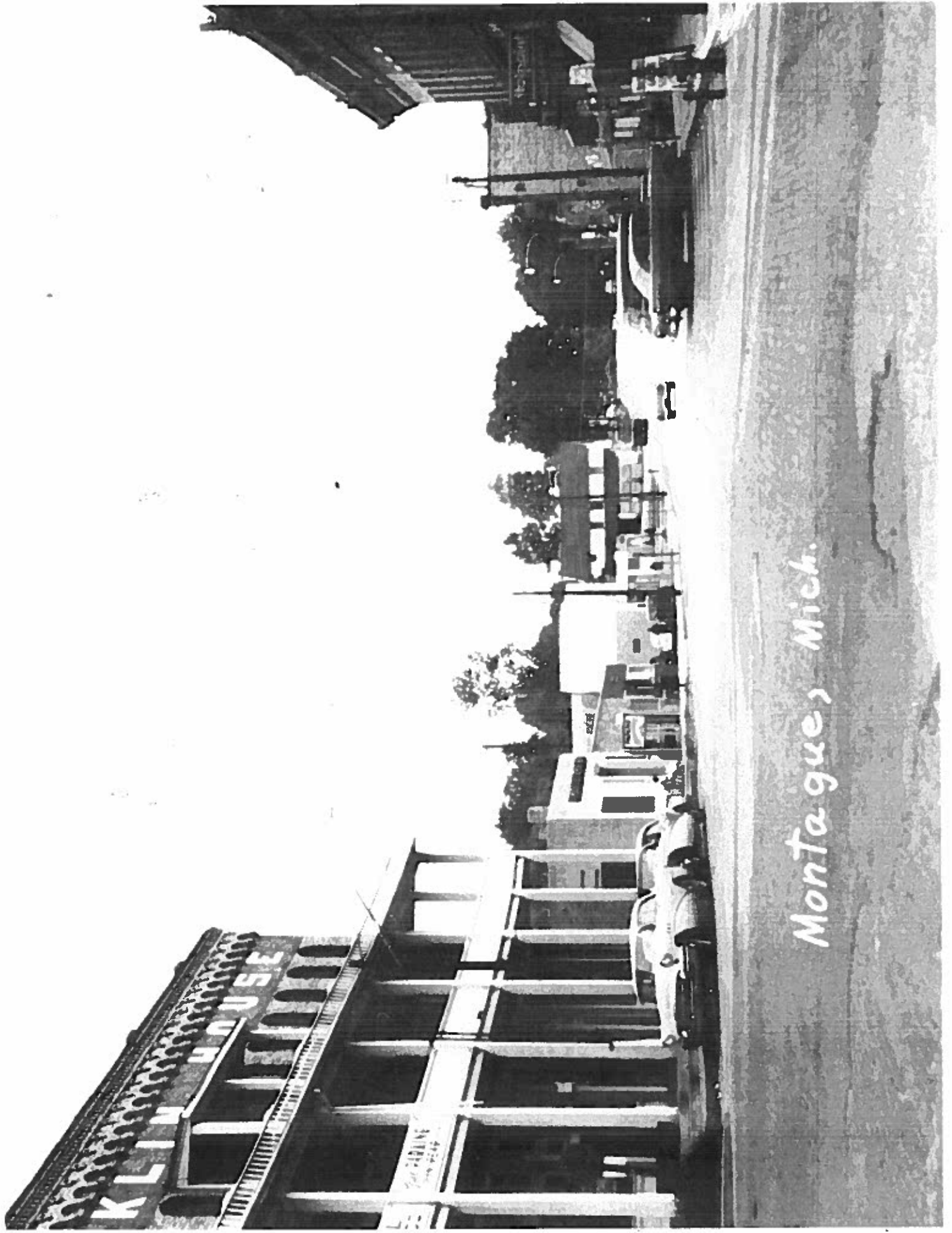
White River Bridge  
between Whitehall and  
Oom



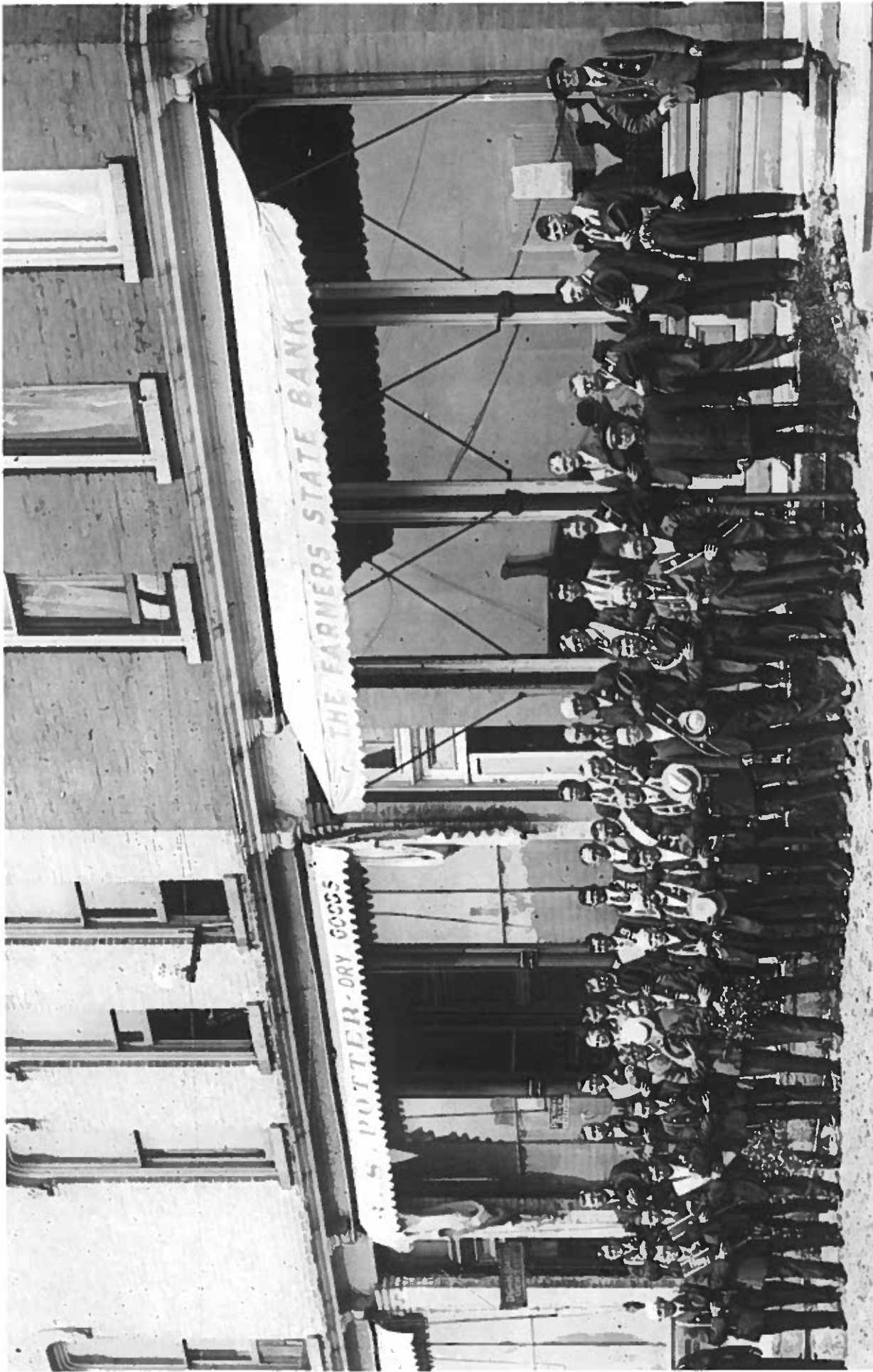




Montague Mich



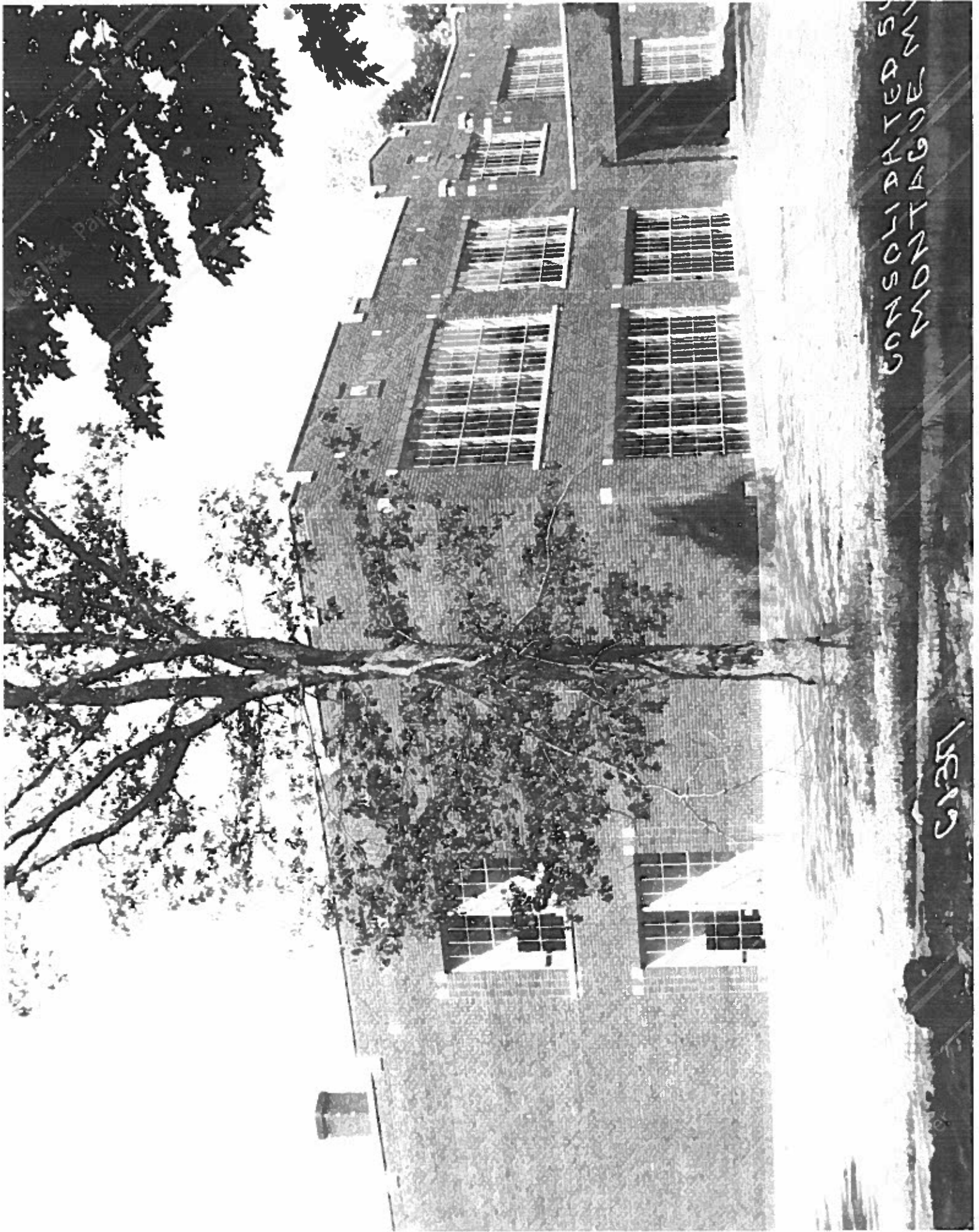
Montague, Mich.



White hall of Montague S. O. F.

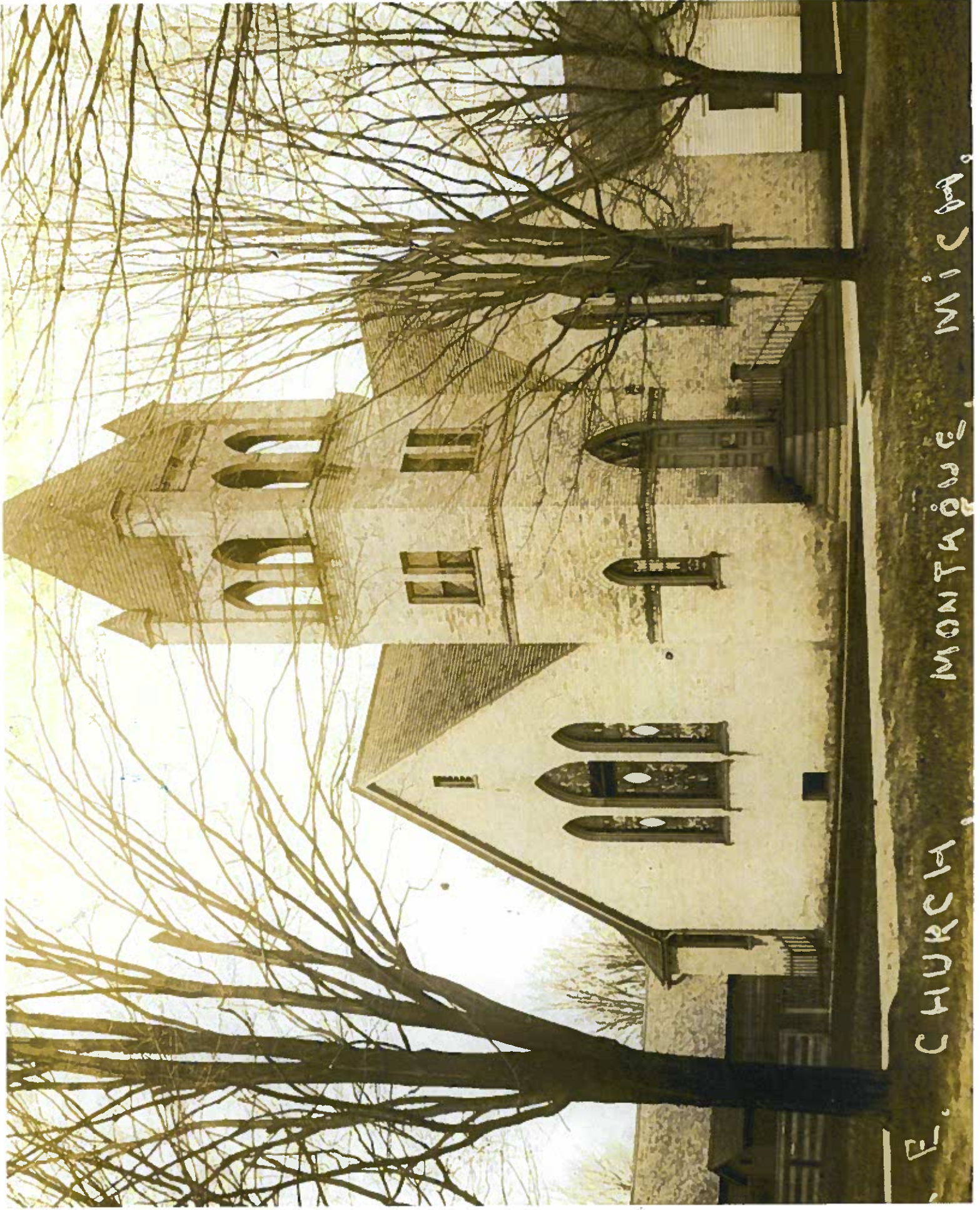


ONTARIO IRON WORKS, MONTAGUE M

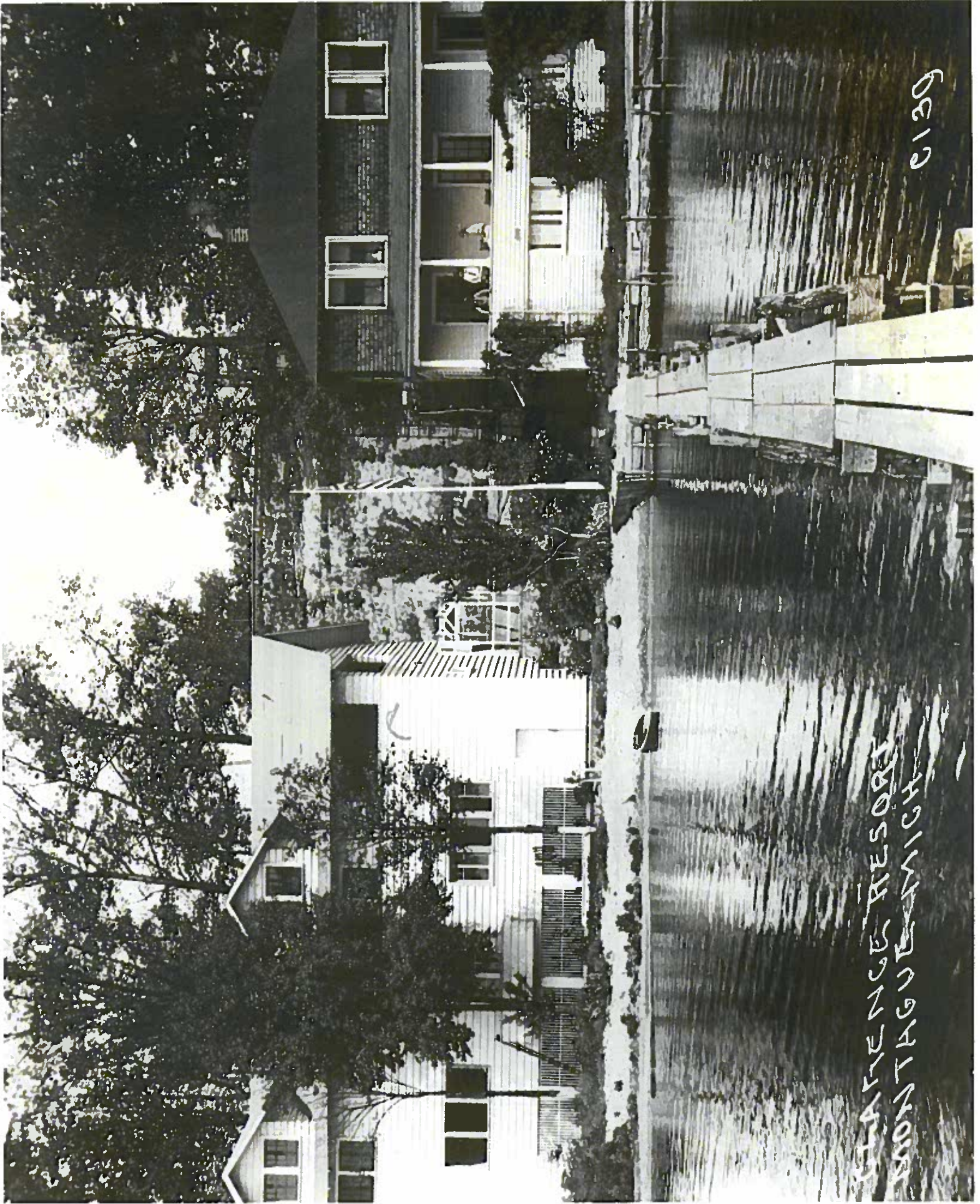


CONSTITUTED 5  
MONTAGUE W

1521



E. CHURCH, MONTAQUE, MICHIGAN.

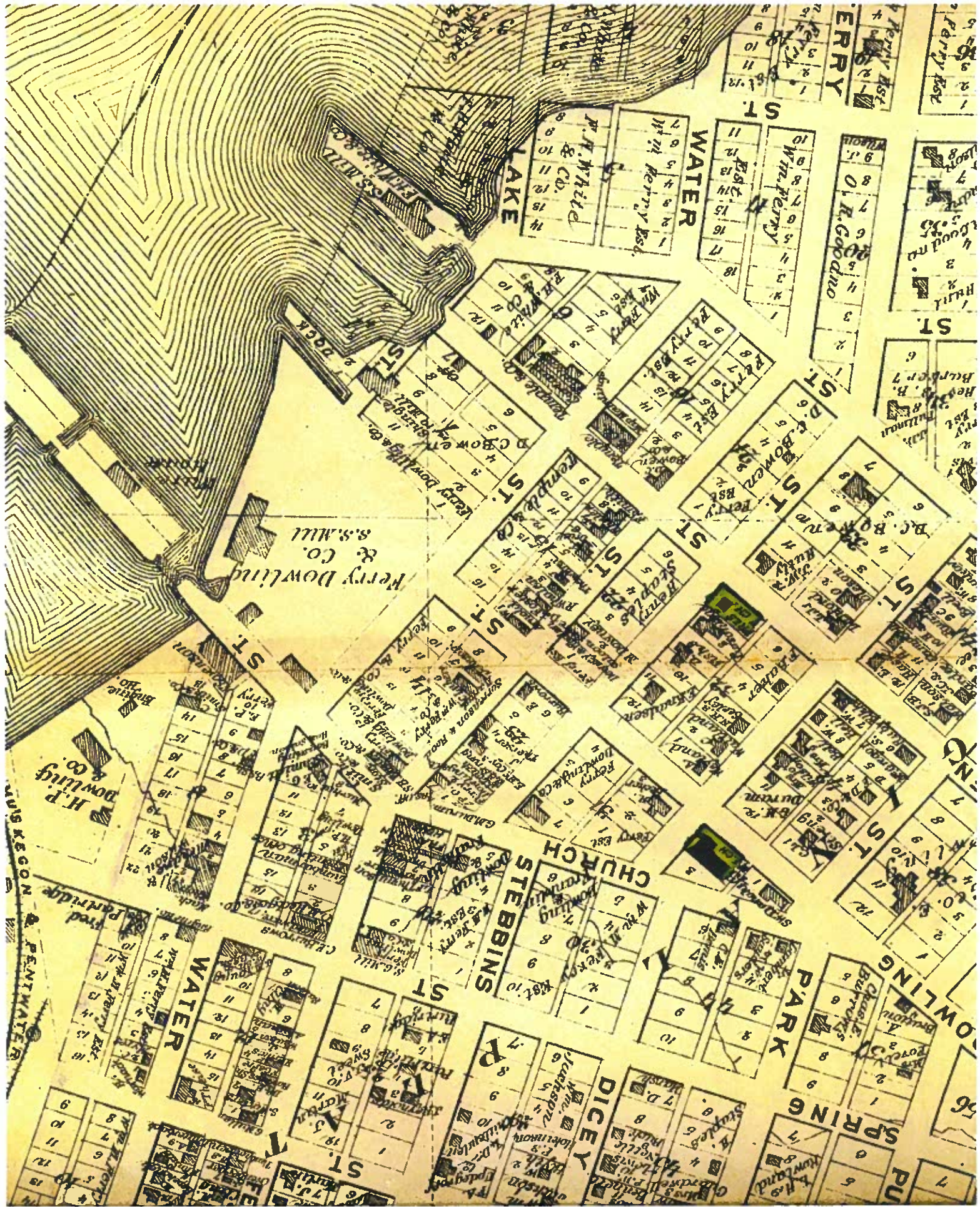


STARVING RESORT  
FOR TAVENICH

6619







ENCE OF FRANK M. CRANE, MONTAGUE, MICH.

