

Rent the Ship

You can rent the ship for evening events:
reunions, luncheons, dinners, youth sleepovers, fund-raisers, etc.

We are Volunteers

We are a 501 C 3 charitable organization, incorporated in the State of Michigan. We are all volunteers — no paid directors, officers, or staff. We are always looking for more volunteers.

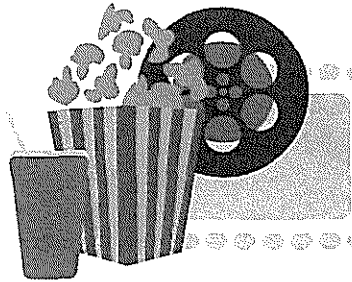
Join the Crew!

Membership has its privileges. See the front desk to become a member of the museum.

Movies On Deck

The Veteran's Museum presents

Friday Night at the Movies



Don't miss a Muskegon summer tradition. Most Friday nights during the summer, USS LST 393 Veterans Museum shows great movies for free on its giant screen on the top deck at dark. Check the website (lst393.org) for listings and bring your own chair.

USS LST 393

560 Mart St • Muskegon, MI 49440

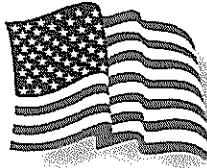
Ph. 231.730.1477 • Rentals 231.725.5918

Email. info@lst393.org • Web. lst393.org

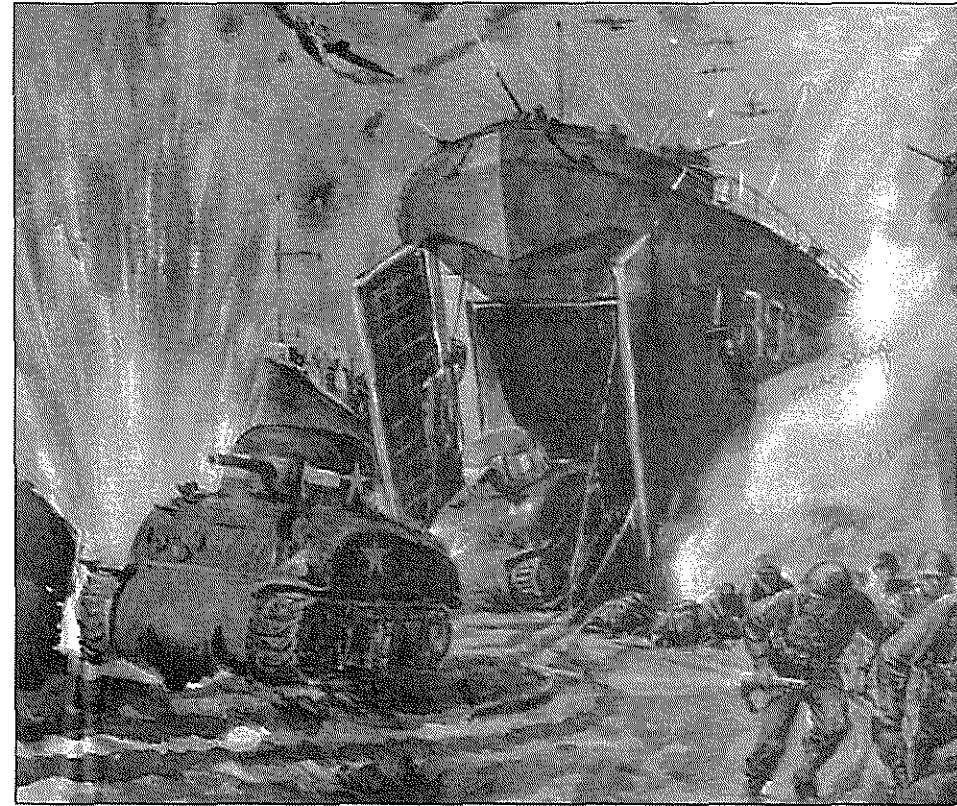
Print services provided by the Muskegon Area Intermediate School District.

USS LST 393 VETERANS MUSEUM

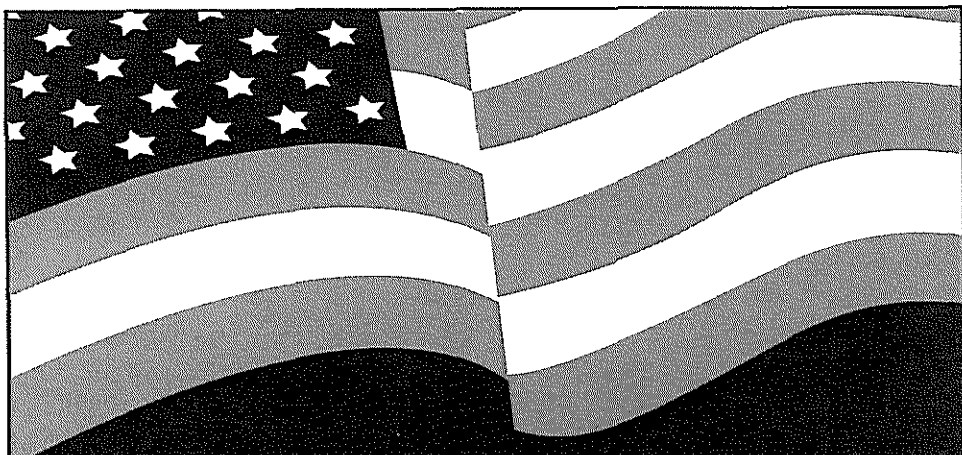
Veterans Museum




TOUR GUIDE



USS LST 393 - LANDING SHIP TANK



Support Your Local
VETERANS
 As They Supported You



The Veterans' Service Center
 165 East Apple Ave., Suite 201 • Muskegon, MI 49442
 Phone: (231) 724-7143 • Web: www.muskegonveterans.com

A Little History

The USS LST 393 Veterans Museum is proud to present for public tour USS LST 393. This ship is one of only two LSTs remaining in the U.S. from more than 1,051 that were built and put into service during World War II. LST 393 earned three battle stars during WWII for the invasions of Sicily, Italy, and Omaha Beach at Normandy, France, on D-Day in 1944. After 30 trips between England and France after D-Day, LST 393 returned to America and was outfitted and painted in a camouflage scheme for duty in the Pacific theater. She proudly wore that scheme until she was repainted in 2015. She is currently being restored to her wartime greatness. Here she will remain for current and future generations to enjoy a historic and authentic piece of American history.

Your Self-Guided Tour

A tour of LST 393 travels up and down six decks. The tour takes up to one hour or more, depending upon your own speed. The ship is a historic WWII warship and is not handicap accessible, other than the main Tank Deck. Please use care and hand rails at all steps and ladders. Parents should keep young children with them and under control. Areas marked "Off Limits" should not be entered.

Some Important Notes

- A. Emergency exit signs are located throughout the ship.
- B. Fire extinguishers and life rings are located at strategic locations on the ship.
- C. First aid supplies are available at the front desk.
- D. The ladders (steps) throughout the ship are very steep. They are not handicap accessible, nor is it recommended that guests with walking difficulties go to the areas of the ship in which the use of these steps is required.

Please turn to Page 4

**Metal Fabricating
 Prototype Capabilities
 State of the Art Laser Cutters
 Short Run & Production Stamping**

Ed Kuznar, President

541 E. Sherman Blvd • Muskegon Heights, MI 49444
 Ph (231) 733-2538 • Fax (231) 733-0983
www.qstamping.com

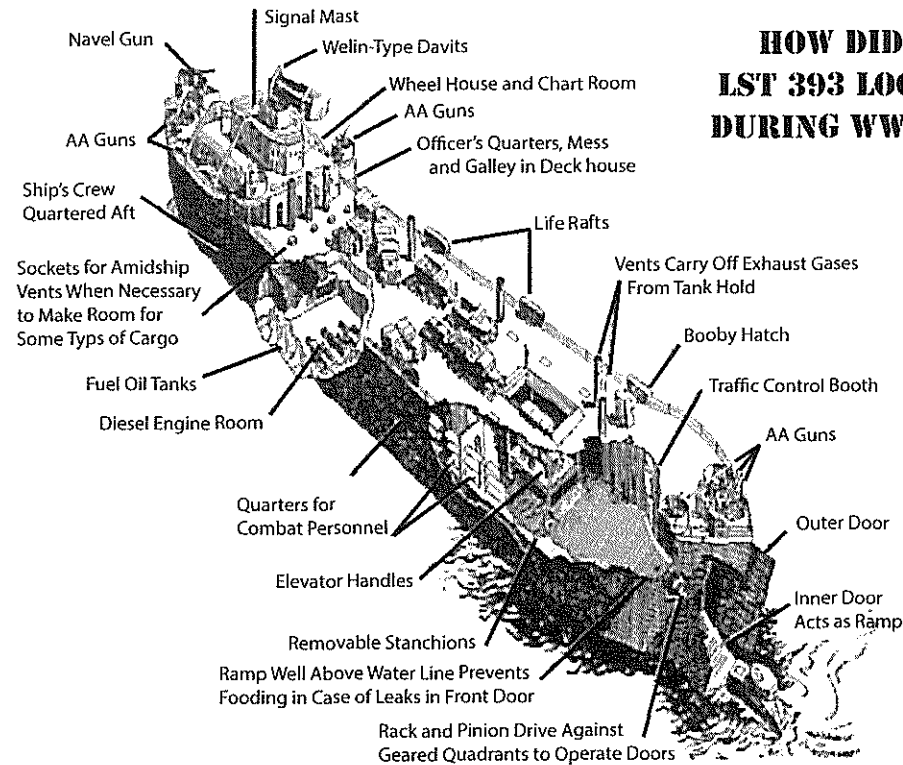


Let's Get Started

There are five open decks on LST 393. You are on the main deck... the Tank Deck. The majority of our artifacts are on this deck. Gift shop and restrooms are also on this deck. Gift shop and restrooms are also on this deck.

The decks are arranged into areas of interest. As you progress through the ship, these areas are marked by large signs suspended from the overhead. This tour book lists all these areas and gives a summation of each one.

The marked areas are listed in this book in order, starting here, where you boarded at the bow entrance. If you follow the sequence as listed in this book, it will lead you through the ship... in that order. You may, of course, spend as much time as you desire in each area.



HOW DID LST 393 LOOK DURING WWII?

Let's Start Here

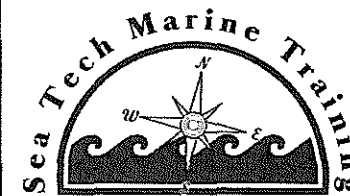
Tank Deck, at the bow end

As you approached the entrance to the ship, you saw a M-65 truck like the thousands carried by LSTs. When you came aboard, you passed between the 24-foot bow doors, a unique feature of LSTs. During WWII, as LST 393 landed on a hostile shore, these doors opened, the ramp came down and the tanks roared out!

As you entered the ship at this bow entrance near the ticket desk, note how huge this ramp is. During WWII the Tank Deck held 28 Sherman battle tanks, or a huge variety of combat machines, or up to 385 fully equipped combat troops. Note the rounded "bumper rails" that run the length of both sides of this deck. During WWII these rails were solid. The openings cut through these walls were put there by the ferry company (called HIGHWAY 16) that operated the ship from 1947 to 1973. We now use the open compartments to display artifacts.

Just inside the entrance you will see the pictures of thousands of veterans. These are the men and women from Muskegon County who served in World War II. Collected by Richard Mullally, there are more than 4,000 of them, archiving almost everyone who served.

Please turn to Page 7



USCG Approved Courses

Sea Tech Marine Training offers a variety of professional classes and services to the boating community and the maritime industry.

Questions?

Call: 231-830-4887

Toll Free: 877.883.9366

Email: EllenSease@yahoo.com

Web: SeaTechMarineTraining.com

Save
10%
OUPV
Class

USCG Approved Courses

- Operator Uninspected Passenger Vessel
- Assistance Towing Endorsement
- Upgrade OUPV to Master's License, 100 tons
- Auxiliary Sail Endorsement



Located in the Holiday Inn
939 Third Street
Muskegon, MI 49440
(one block from the USS LST 393)

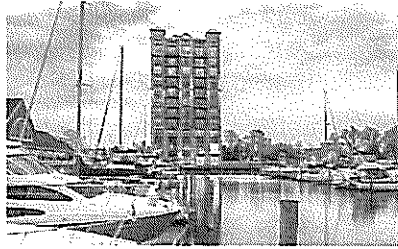
Full service restaurant & bar
Outdoor seating available
Live Music (call for schedule)

Reservations: 231-720-7123

www.Thirdstreetgrille.com
www.Facebook.com/Thirdstreetgrille

Shoreline Inn

& CONFERENCE CENTER
ON MUSKEGON LAKE



Muskegon's Only Waterfront Hotel

Located next to the USS LST 393

(866) 727-8483

750 Terrace Point Dr
Muskegon, MI 49440

www.ShorelineInn.com

Tank Deck Continued

Now start looking up to see the area signs. They begin here and are listed throughout the following pages.

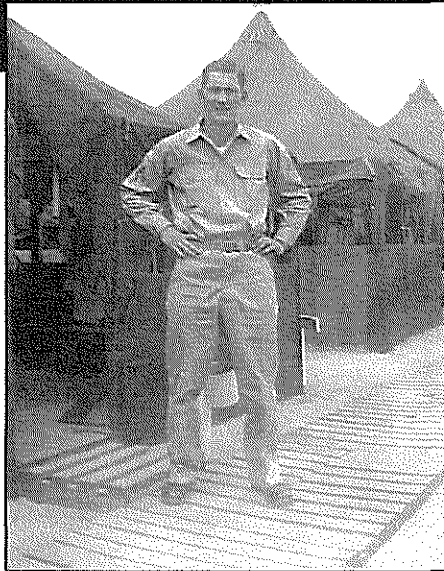
- ◆ Memorabilia from the days LST 393 served as a car freighter (two trips a day to and from Milwaukee) and ships anchor locker.
- ◆ Special tribute to our missing MIA's and POW's.
- ◆ Large scale models of LSTs.
- ◆ Orientation Theater... Watch a DVD of a WWII LST in action.
- ◆ USS Enterprise 10-foot-long hand-made model built by LST 393 volunteers.
- ◆ Display of U.S. Navy and Marine artifacts.

SPECIAL NOTE: To your left is the battle flag flown over LST 393 at Omaha Beach on D-Day and a piece of the champagne bottle used by 11-year-old Lucy Sorenson (Pape) to christen LST 393 in 1942.

- ◆ Models of the combat vehicles once carried by this ship.
- ◆ Display to honor Muskegon's "Ike" Kepford, the top Navy Corsair fighter pilot of WWII.
- ◆ Special tribute to "Women in the Military" featuring uniforms, memorabilia and photos.
- ◆ Exhibit of World War II era weapons, knives and bayonets.
- ◆ Display of artifacts honoring veterans of the Korean War 1950-1953.
- ◆ Go up the steps to the Exhibit of U.S. Army field equipment, our "Home Front" exhibit and large display of model aircraft. You will also find a display of uniforms and flags of the Axis powers of WWII.
- ◆ Now return back to the tank deck the same way you came up to this display. The exit door at the end of the models display is for emergency only.
- ◆ Red Seal military truck engine made by Continental Motors in 1942 and M-60 battle tank engine, both on loan by L-3 Combat Propulsion Systems.
- ◆ Now note the U.S. Air Corps and U.S. Air Force display. Look up throughout the entire Tank Deck all the large-scale aircraft models suspended from the overhead.
- ◆ As you walk, you'll see the large "Veterans Photo Wall of Honor" display. Any veteran, any era, can be honored here. The volunteer at the entrance can explain how to add yourself or a loved one to this display. Also note the overhead uniform display.

In Honor of Bud Bradford

WWII Veteran



231.725.8232

237 W. Laketon Ave.
Muskegon, MI
budandrays.com
budandrays@gmail.com

BUD & RAY'S
TRANSMISSION SERVICE

Please turn to Page 8

Tank Deck Continued

- ◆ At the stern is our tribute to Vietnam veterans, including photos of almost all 60 Muskegon County servicemen killed during that conflict.
- ◆ Now move to the other side of the Tank Deck (the starboard side). Note "way back" in the corner is the ships laundry room. This one machine did the washing for the whole ship.
- ◆ In the large green display case is our collection of artifacts donated strictly by Muskegon veterans and families.
- ◆ Next you come to a life-size painting of a Sherman tank. LST 393 could carry up to 28 of these.
- ◆ In the center of the Tank Deck is a display on D-Day and the Muskegon men who fought in it.
- ◆ Next you will come to a unique collection of 179 helmets from armies around the world and three complete uniforms.
- ◆ Note the recent donation of artifacts from the Iraq and Afghanistan conflicts.
- ◆ Next up is the WWI display... containing many special and rare items.
- ◆ The next compartment is the vehicle battery charge and battery repair room.
- ◆ After viewing the battery room, note on the left: a German Nazi campaign flag — signed by the soldiers who captured it during the battle for Metz in November 1944.
- ◆ Move on toward the bow and see our tribute to America's four-legged veterans, the war dogs.
- ◆ The last display on this deck is this WWII MB Jeep. It has been faithfully restored by its owner, Gary Yakubowski from Coopersville, and is on loan to our museum. The mounted gun is an air-cooled .50 Cal. machine gun.

Please turn to Page 10

C RICHARD BORGESON ARCHITECT PLLC

Reg. Architect Michigan #15352

RICHARD BORGESON

1050 WEST WESTERN AVENUE
SUITE 311 • MUSKEGON MICHIGAN 49441

PH 231 740 8661 • Fax 231 726 4694

crborgie@yahoo.com

Benson Drug Company

**Third Generation
Family-Owned Pharmacy
Since 1919**

**SAV-MOR™
DRUG STORES**

- Personal service
- Competitive prices
- Proud home to Benson's Bottom Paint

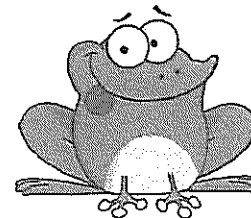


Store Hours
Monday-Friday: 8:30am-8pm
Saturday: 8:30am-2pm
Sunday: 8:30am-12:30pm

Phone: 231-722-2861 • Fax: 231-726-5522
961 Spring St. Muskegon, MI 49442 • www.bensondrugco.com

TIPSY TOAD TAVERN & GRILL
609 W. WESTERN AVE.
MUSKEGON, MI. 49440
231-725-7181

burgers, salads, fish, burritos & more!!!!
check out our great selection of micro-brews!!!!



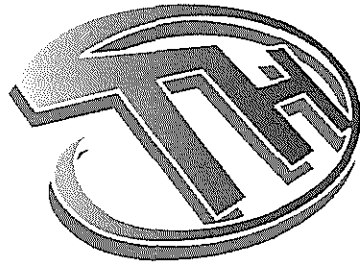
**10% off your guest check
with this ad!!!**

**offer excludes alcoholic beverages
please present to server prior to ordering**

Berthing Deck

- ◆ In the center of the Tank Deck is a yellow ladder taking you to the Berthing Deck. Note the restored wash area.
- ◆ As you continue, you are now in the berthing area where the combat troops would have slept. We now allow Scouts, other youth groups, families, and other adult groups to sleep overnight in these bunks.
- ◆ On your right is the yellow ladder to the hold and the Engine Rooms, two decks below. As you go down to the engine room, you'll see the Sperry Gyro, a vital part of the steering/navigating system of the ship.
- ◆ After visiting the Engine Room and the diesel locomotive engines that ran the ship, go back up to the Berthing Deck and continue toward the rear (aft) of the ship.
- ◆ Turn left into the rear compartment. Go down the steps and view the ship's galley stores area, the ship's refrigerators, and the stern manual rudder room. Here the ship could be steered manually if the command bridge (several decks above you) lost electrical control due to enemy action. Note also that the galley is two decks above you. All food and galley supplies stored down here had to be hand carried up the two decks to the galley. Now go back up the steps you just came down.
- ◆ Walk back through the opening you used to get to this area, and go up the yellow ladder to the next deck, the Galley and Officers Deck.

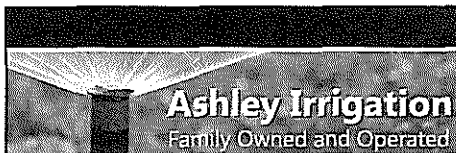
Please turn to Page 14



Trophy House JONESSPORTS

Sporting Goods - Apparel
Team Sports - Awards
Promotional Items

2350 Henry St. Muskegon, MI 49441
trophymuskegon.com | 231.755.3096



- Irrigation Install & Service
- Snowplowing

Office (231) 766-3540

Cell (231) 343-6111

Tom & Carrie Orear

Nonna's Café

Phone (231) 375 5474
701 East Apple Ave.

• Good Food • Good Friends • Good Times



We proudly offer
10 percent discount
to veterans who
served our country.

"Thank you for your service."

Breakfast Specials
Tuesday - Friday

Daily Lunch Specials
(except Saturday)

Hours:

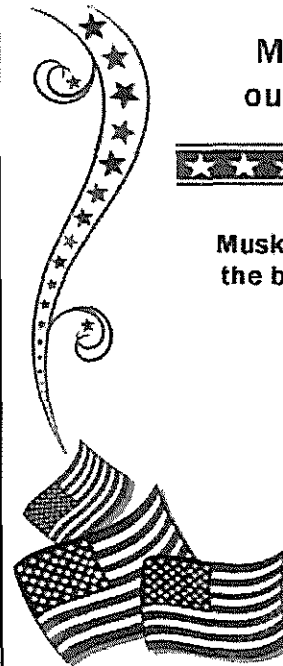
6 am to 2 pm Tuesday - Saturday • 7 am-2 pm Sunday • Closed Mondays

Muskegon Co-op FCU proudly supports
our military. Thank you for your service.

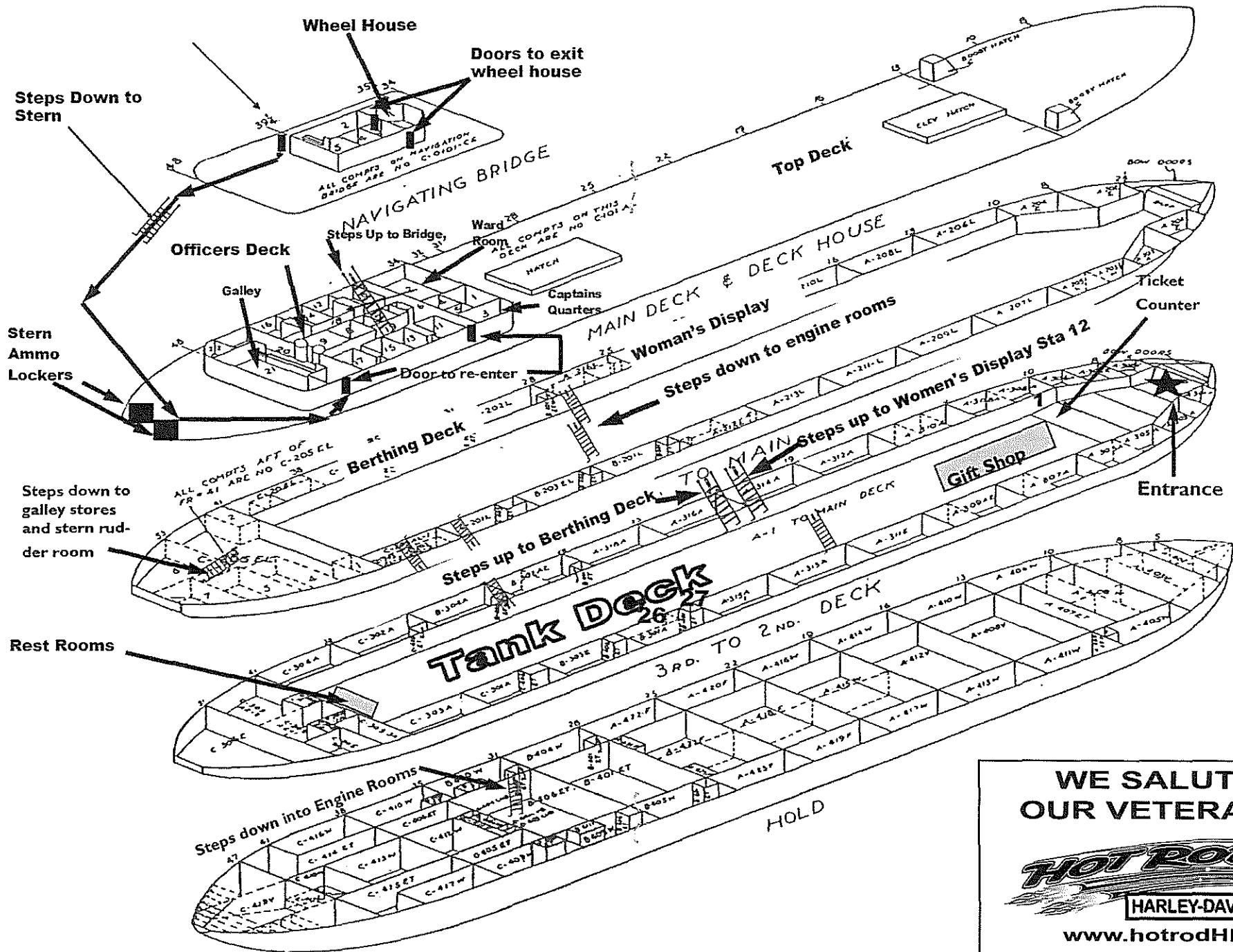
Muskegon Co-op Federal Credit Union offers some of
the best loan rates in town. Open an account today.

1051 Peck Street, Muskegon, MI 49440
1920 E. Laketon Ave., Muskegon, MI 49442

231-726-4871



MUSKEGON
CO-OP FEDERAL CREDIT UNION



**WE SALUTE
OUR VETERANS**



www.hotrodHD.com
 231-722-0000
 149 Shoreline Drive • Muskegon, MI

Galley and Officers Deck

- ◆ First is the Galley on the right. Here the enlisted men went through the chow line to get their food. The ship had 13 cooks (over three shifts) that could provide three meals a day to the crew of 120 officers and men and an additional 250 "guests" like tank drivers and soldiers. A favorite among the troops was fresh homemade bread.
- ◆ Then go left onto the Officers Deck. This area was strictly off limits to enlisted personnel. Here are the staterooms featuring beds with real mattresses for the 12 ship's officers, and the officers of the combat troops heading for battle... not like the "racks" the enlisted troops used on the berthing deck.
- ◆ Go to the forward end of this deck to find the Officers Mess (or Ward Room). This is the area where officers could sit at tables and be served their food by uniformed stewards. No chow lines for them! Also at this end of the deck is the Captain's Quarters.
- ◆ Note that there are 4 hatches (doors) on this deck that go to the large outside deck or Weather Deck. You are welcome to walk on this deck. During WWII, this deck was covered with anti-aircraft guns and a variety of stored combat equipment that came up from the tank deck via the ship's cargo elevator. The area toward the bow, enclosed by white chain, marks this elevator.
- ◆ Now, back on the officers deck, go up the steps (found at the center of the deck), to the Navigating Bridge Deck.

Please turn to Page 17

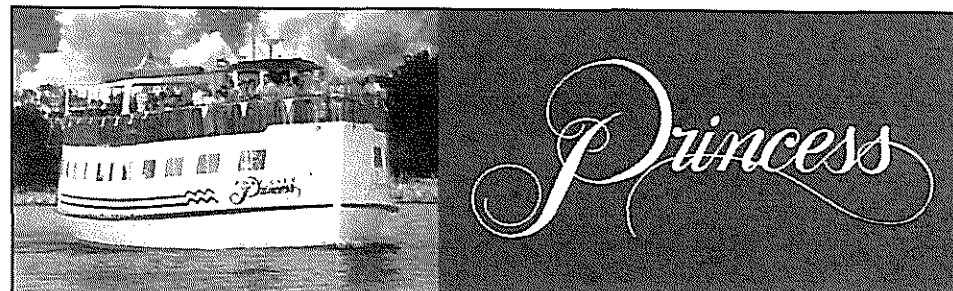
VISIT THE LST 393 EXCEPTIONALLY FINE GIFT SHOP



Our gift shop boasts a wide selection of clothing, books, small gifts and many nautical related items to suit all ages and budgets.

Every item purchased helps support the preservation of USS LST 393 for future generations!

Open 10:30 a.m. to 4 p.m. daily.



Cruise Beautiful Lake Michigan & Muskegon Lake Public Cruises and Private Charters

231-903-0669 • www.portcityprincess.com
560 Mart St. at the Mart Dock • Muskegon, MI 49440

★

★

★ SOUPS ★

★ SALADS ★

★ WRAPS ★

SANDWICHES ★ MELTS

DELI DOGS ★ BRATS

★ ROOTBEER FLOATS ★

★ ICE CREAM SUNDAES ★

★ BANANA SPLITS ★

557 W. WESTERN AVENUE
MUSKEGON, MI ★ 231.375.0468

DINE IN ★ CARRY OUT

M-F 11am-8pm ★ Sat 11am-4pm

Free WIFI ★ like us on Facebook

REDI RENTAL

Equipment for Professionals and Do-it-Yourselfers!

Muskegon • Grand Haven

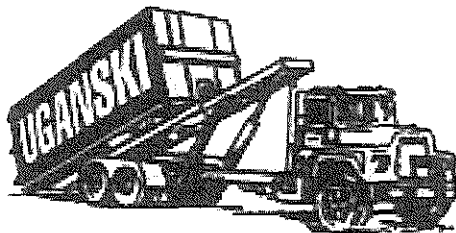
**WE THANK EVERY VETERAN WHO WALKS
THROUGH OUR DOORS WITH A
10% DISCOUNT**

**Thank You
Veterans!**

231.737.7368

WWW.REDIRENTAL.COM

**“HERO’S DON’T WEAR CAPES
THEY WEAR DOG TAGS”**



UGANSKI ROLL-OFF SERVICES

231.206.7383

WWW.UGANSKI.COM

THANK YOU VETERANS!

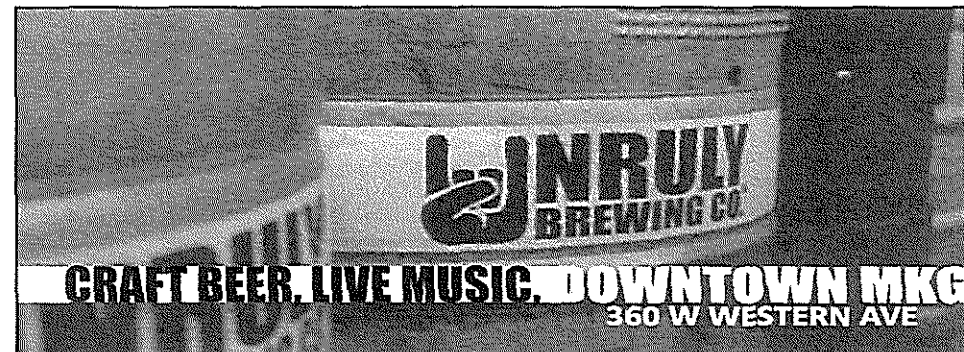
Navigating Bridge Deck

- ◆ At the top of these steps, to the left, is the radio room... still to be completely restored.
- ◆ Move to the right at the top of the steps, and enter the chart room. Here were the maps and charts used for plotting the ship's courses.
- ◆ Move through the chart room, and enter the pilot house, also known as the wheel house. Here were the brains of the ship. Almost every aspect of the ship operation could be controlled or instructed from here. The captain's quarters is located directly under the pilot house, and equipped with communications gear so he could be in continual contact. Directly over the pilot house was the "Captain's Con". This was a small compartment with 360 degrees of visual reference, and communication equipment with which the captain could pass commands to the bridge. The large glass windows were installed when the ship was a freighter; during the war, this forward wall was thick metal with small port holes only!

NOTE: Most of the equipment in the wheel house is original, but fragile. Please do not touch any switches, dials, or pieces of equipment.

- ◆ You are welcome to go through the hatches (doors) to the outside of the pilot house. Here are the towering lifeboat davits, and note the round weldments on the deck at your feet. These were the locations of gun emplacements.
- ◆ View our one deck gun, a 3-inch, 50 caliber, Mark 4, anti-aircraft gun. We also have two replica 20 mm antiaircraft cannons.
- ◆ Next, go back down to the Galley/Officers deck. You can do so by retracting you steps down the ladders inside or you can go down one of two sets of steps outside the wheel house. One set is on port side, the other set is at the rear (aft) of the wheel house. Whichever you opt to use, re-enter the ship on the Galley/Officers deck.

Please turn to Page 19





**golden
corral**

Buffet & Grill

*Discover the
Chocolate
Wonderfall!*

The 8th wonder of the world!

1788 Sternberg Road, Muskegon

213-798-2200

just a 1/2 mile west of Highway 31

LEE'S
Famous Recipe Chicken



*3 Locations
to serve you*

856 W. Sherman Blvd. 755-4333

1317 Apple Ave. 777-3020

200 North Causeway 744-9592

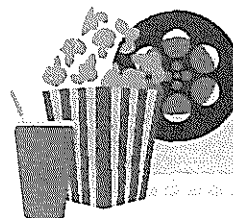
Call 726-2888 for

CATERING

Navigating Bridge Deck Continued

- ◆ Now go to the starboard side (water side as opposed to shore side) of the deck. Go down the yellow ladder located here (right next to the galley).
- ◆ You should now be one deck down from the Galley/Officers deck, on the starboard side of the ship. Right in front of you is an open hatch (door) going to the right. Enter through this door.
- ◆ You will first pass the scullery where the dishes, pots, and pans were scrubbed after each meal.
- ◆ Next look into the Sick Bay. All medical problems aboard ship had to be addressed here. Look behind you, down at the bottom of the wall, right next to the floor (deck). The horizontal oval door there opens onto the Tank Deck. Wounded men on stretchers could be passed up from the Tank Deck, through this opening, and placed into sick bay. This eliminated the need to try to carry a severely wounded man up and down the narrow steps between decks.
- ◆ Continue past Sick Bay and enter the Mess Deck. This is the area the enlisted men had to bring their food from the chow line up in the galley. There were four compartments like this... we have restored this one only.
- ◆ Continue now into Hall of Uniforms, a display of military wear from all four services including helmets, foot gear, and outerwear.
- ◆ At the end you will find a yellow ladder to take you back to the Tank Deck where you can end your tour at the ship's fully stocked Gift Shop, a must for anyone who wants a souvenir to remember their tour of the USS LST 393 Veterans Museum.

Please turn to Page 22



Movies On Deck

The Veteran's Museum presents

**Friday Night
at the Movies**

See back cover for details.



Dine In or Take Out

OPEN: MON - SAT
11:00am - 8:00pm

CLOSED: SUN
(& MON in WINTER)

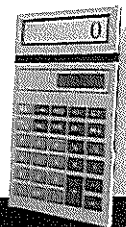
--1129 3rd St. MUSKEGON, MI--

Quality Accounting & Tax Service Inc.

Business and Personal Income Taxes

- Business Start-Ups
- Payroll Services

*Serving West Michigan
for 25 years*



Max E. Myers, EA

maxmyers@maxthetaxman.net

Mary Ellen Myers

marymyers@maxthetaxman.net

1020 Gordon Street Muskegon, MI 49442 • P. 231-777-6092 • F. 231-767-1120

NO PROJECT TOO BIG OR SMALL



Home Remodeling Design • Roof Truss Design and Engineering
Floor Systems Design and Engineering • Boom Truck Services

346 W. Laketon Ave. Muskegon MI 49441

Ph: (231) 726-2706 • Fx: (231) 722-7491 • www.keenelumber.com

Muskegon's Own

Pigeon Hill

Brewing
Company

JOIN US ACROSS THE STREET FOR THE
FINEST LOCAL CRAFT BEER.



878 Jefferson Street, Muskegon
(231) 726-6317

HOURS:

Monday – Saturday
7 AM – 3 PM

Sunday
8 AM – 2 PM

RAMOS
and Sons



AUTO BODY · TOWING

"Ramos to the rescue!" 231-739-7240

O'Malley's Pest Control, Inc.

Rob O'Malley
Certified Applicator

1846 Sanford St.
Muskegon, MI 49441


Bus: 722-4686
Fax: 722-4688
(800) 362-4035

GOT A QUESTION? FIRE AWAY!


Throughout the ship there are hundreds of artifacts. We have undertaken the lengthy process to label them with information to identify and explain their use, but we are not finished. If there is an item that was of special interest to you, be sure to mention it to the volunteer at the front desk. If he cannot answer your question, he will find the answer for you. Thanks for coming and do return often, as we are continually adding and changing displays.

Our mission: To honor all American veterans. Your ticket purchase and/or donation goes 100 percent right back into this great ship so that we may better realize our mission.

*Thanks for coming, Scott Grant
President, USS LST 393 Veterans Museum*



**In Honor of James Fagan
WWII Veteran
From Those Who Loved Him**



The Cheese Lady
Downtown Muskegon

Visit us and experience cheeses, wines
and all the extras from around the world!

**Open Tuesday - Friday 10-6
Saturday 9-4
Closed Sunday and Monday**

808 Terrace Street
Between Western and Clay
231.728.3000


THE RICHARD MULLALLY PROJECT

Do you know a Muskegon County Veteran of WWII?

Muskegon's own Richard Mullally is four years into a project to preserve photos and military history of all Muskegon County residents who served in WWII. This is a huge undertaking as there were more than 4,000 men and women who served. Richard interviews each one of them, or their family, one at a time. Some of the results of this project can already be seen on the USS LST 393 Veterans Museum. We are proud to be part of this effort. You can help! If you know of a WWII veteran who should be part of this project, please contact Richard to start the ball rolling toward preserving the history of your veteran. Contact Richard Mullally at: 231-744-3418



**Visit the
LST 393
Gift Shop**



*Thank You Veterans,
for Serving our
Country and Protecting
our Freedom!*




Photo Restoration Services

*Paula Meyer
Graphic Designer*
InDesignPM@Outlook.com



DOWNTOWN LOCATION
500 W WESTERN AVE.
MUSKEGON, MI 49440
PHONE: (231) 722-6208

🍷 Full service restaurant and bar
🍷 Seasonal outdoor seating available

APPLE AVE. LOCATION
2155 APPLE AVE.
MUSKEGON, MI 49442
PHONE: (231) 773-4444

🍷 Full service restaurant and bar
🍷 Delivery and Take-Out available