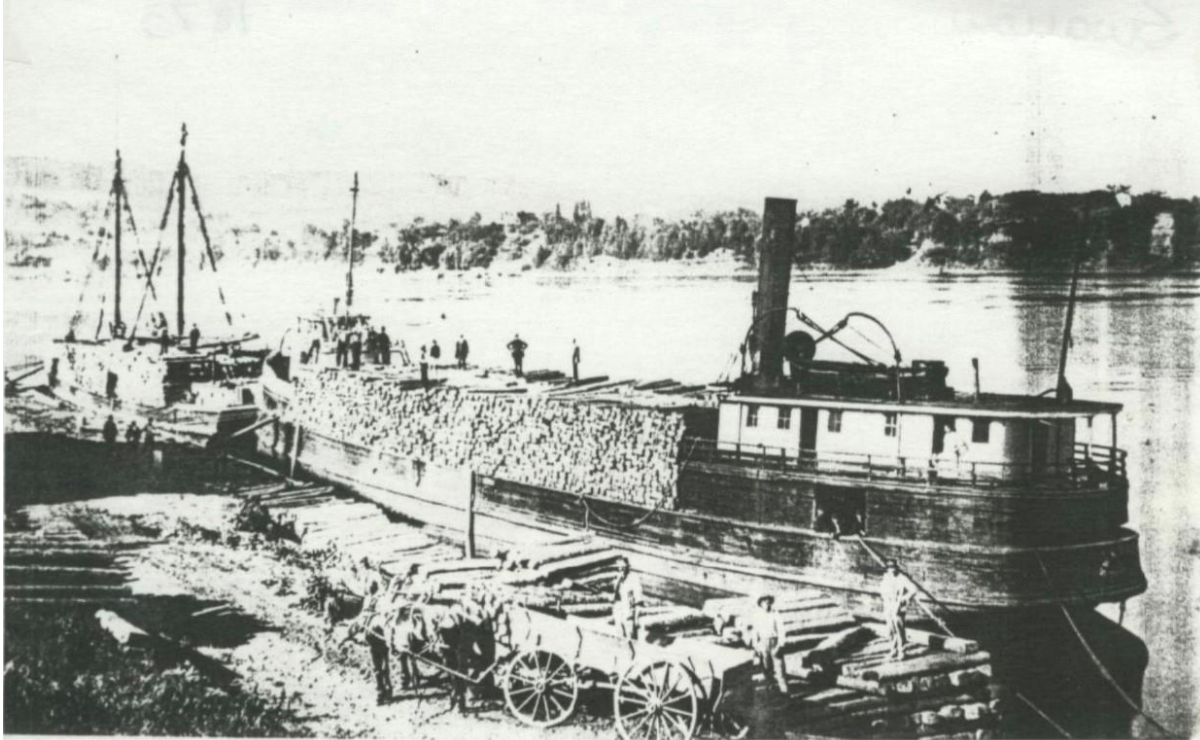


Swallow

By Barbara Bedau Brow
White Lake Area Historical Society



The Swallow – Possibly loading up at the Heald, Murphy, Crepin Lumber Mill in Montague.

The Swallow was a wooden steambarge built in 1873 in Trenton, Michigan, by Alvin A. Turner. David C. Whitney and James Chase, of Detroit were the original owners of the vessel. It was 133.8' in length with a 25.8' beam and was 10.8' in depth.

It was launched from Trenton, Michigan on 2 July 1873. By 25 April 1879, Swallow was owned by Simon J. Murphy, Joseph Heald and Ernest E. Crepin of Montague. They were owners of the Heald, Murphy, Crepin mill located on the north side of White Lake in the Maple Grove area.

On 20 May 1886 the vessel was owned by E. E. Crepin of Chicago, and Capt. Andrew Flagstad of Montague. It was damaged in Lake Michigan during a squall in June 1886 and sank in Chicago. It was raised, repaired and readied to be put back into service.

On 24 March 1887, it was reported that Capt. Flagstad had sold the propeller Swallow to Messrs. H. W. Cook and Alex Campbell of Michigan City. Over the years she was bought and sold several other times.

On 5 October 1900 the Swallow sank in a collision with Sir William Siemens in the St. Clair River laden with cedar posts and shingles. She was raised on 18 October 1900.

In May 1901 William E. Lennac of Detroit purchased Swallow. She foundered in Lake Erie on 19 October 1901 in a heavy gale while hauling lumber and shingles. The crew was rescued by her tow barge. They were picked up by the steamer Walter Scranton after 39 hours.